



OFFICE/WAREHOUSE SPACE FOR LEASE

\$12.50 - \$14.50 PSF, NNN

**2205-2255 EXECUTIVE CIRCLE
COLORADO SPRINGS, CO 80906**

- Located in Colorado Springs' southeast submarket close to the El Pomar Sports Complex five minutes from I-25 & Lake Ave
- Benefit from Colorado Opportunity Zone incentives
- Ten minutes to downtown
- 15 minutes to the airport
- Close to restaurants, shopping, entertainment, hotels and banking
- Professionally managed
- Ample parking

YEAR BUILT	1984
LAND AREA	2.69 AC
AVAILABLE RSF	2,601 – 7,505 contiguous
ZONING	BP
CONSTRUCTION	Masonry
CLEAR HEIGHT	12.5'
LEASE RATE	\$12.50 - \$14.50 PSF, NNN
NNN EST	\$4.50 PSF



RUSSELL STROUD, CCIM | 719.238.8695
Principal | rstroud@sococre.com

MARY FRANCES COWAN, CCIM | 719.337.1500
Principal | mcowan@sococre.com

17 South Wahsatch Avenue
Colorado Springs, CO 80903
www.sococre.com

THE INFORMATION CONTAINED HEREIN WAS OBTAINED FROM SOURCES BELIEVED TO BE RELIABLE, HOWEVER, SOCO COMMERCIAL REAL ESTATE, LLC MAKES NO GUARANTEES, WARRANTIES, OR REPRESENTATIONS AS TO THE COMPLETENESS OR ACCURACY THEREOF. THE PRESENTATION OF THIS PROPERTY IS SUBMITTED SUBJECT TO ERRORS, CHANGES OF PRICE OR CONDITIONS PRIOR TO SALE OR LEASE, OR WITHDRAWAL WITHOUT NOTICE



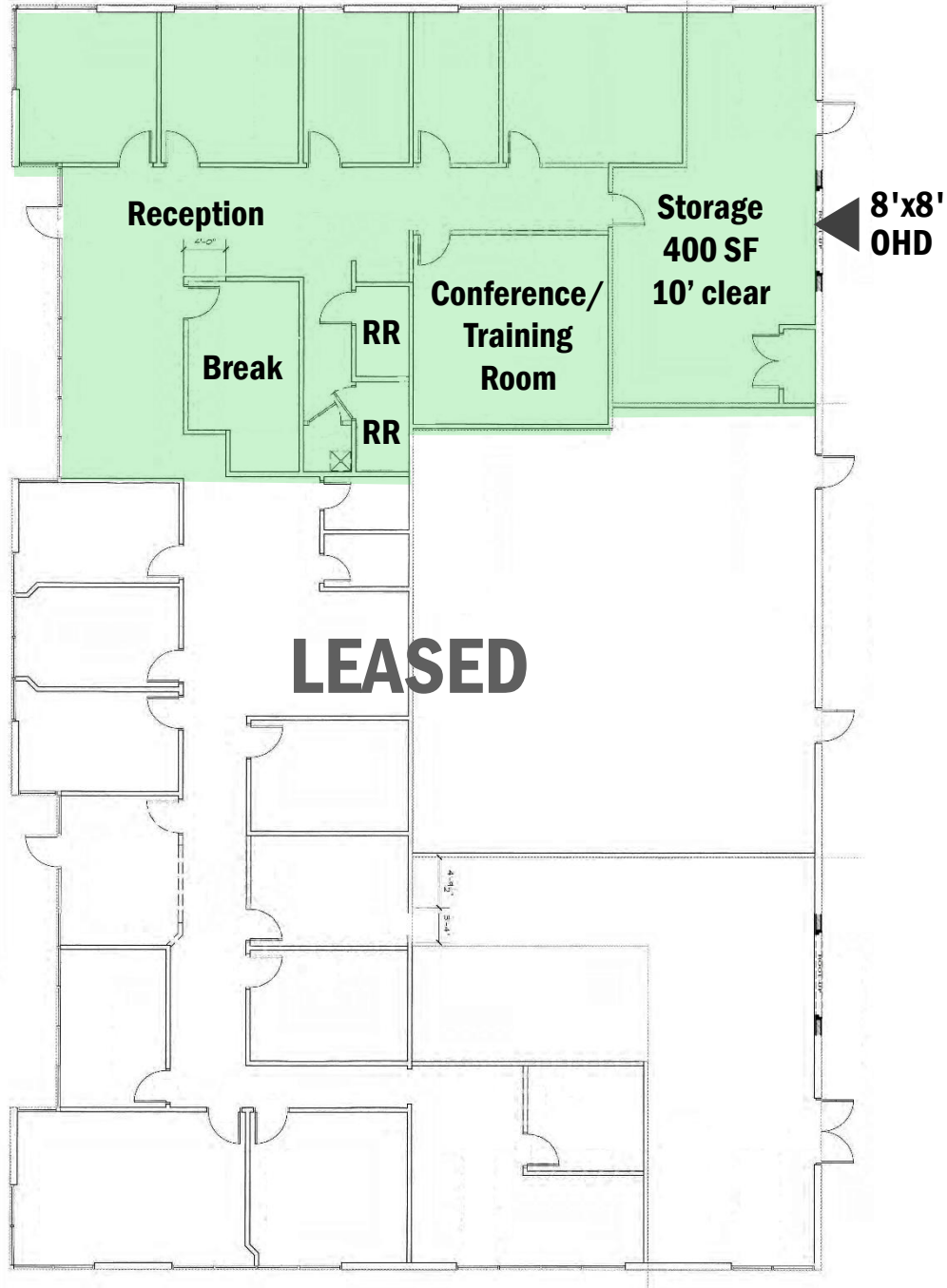
SOCO Commercial Real Estate, LLC

17 South Wahsatch Avenue, Colorado Springs, CO 80903 www.sococre.com

THE INFORMATION CONTAINED HEREIN WAS OBTAINED FROM SOURCES BELIEVED TO BE RELIABLE, HOWEVER, SOCO COMMERCIAL REAL ESTATE, LLC MAKES NO GUARANTEES, WARRANTIES, OR REPRESENTATIONS AS TO THE COMPLETENESS OR ACCURACY THEREOF. THE PRESENTATION OF THIS PROPERTY IS SUBMITTED SUBJECT TO ERRORS, CHANGES OF PRICE OR CONDITIONS PRIOR TO SALE OR LEASE, OR WITHDRAWAL WITHOUT NOTICE REV 01/30/23



SUITE A ±3,500 SF



2205-2215 EXECUTIVE CIRCLE PROPERTY HIGHLIGHTS

BUILDING SIZE	9,000 SF
AVAILABLE SPACE	Suite A - 3,500 SF with 400 SF of storage
LOADING DOORS	One (1) 8'x8' overhead door
BASE LEASE RATE	\$12.50 - 14.50 PSF, NNN
NNN EXPENSES	\$4.50 PSF



2225-2255 EXECUTIVE CIRCLE

PROPERTY HIGHLIGHTS

BUILDING SIZE	28,000 SF
AVAILABLE SPACE	Up to 7,505 SF contiguous
LOADING DOORS	One (1) 8'x10' & Four (4) 10'x10' drive-ins
BASE LEASE RATE	\$12.50 - \$14.50 PSF, NNN
NNN EXPENSES	\$4.50 PSF

