

5415 MARK DABLING BOULEVARD

FOR SALE OR LEASE – 22,684 SF TWO-STORY OFFICE WITH WAREHOUSE



PRICE IMPROVEMENT | Sale Price \$3,299,000



RUSSELL STROUD, CCIM | 719.238.8695

Principal | rstroud@sococre.com

MARY FRANCES COWAN, CCIM | 719.337.1500

Principal | mcowan@sococre.com

**CLICK HERE TO VIEW
PROPERTY WEBSITE**



5415 MARK DABLING BLVD **FOR SALE OR LEASE**

Excellent owner/user opportunity consisting of a two-story office building with warehouse & lab.



- 5,554 to 14,276 RSF for lease
- Large conference/meeting rooms
- Perimeter offices with windows & natural light



- Located in the heart of Pikes Peak Research Park with convenient access to walking/biking trails & retail
- Easily accessible from I-25 via Garden of the Gods Rd and Rockrimmon Blvd exits.

TOTAL GLA 22,684 SF

LAND AREA 1.19 AC

SALE PRICE \$3,299,000
~~\$3,499,000~~

ZONING BP

PRICE PSF \$145.43

YEAR BUILT 1985

PARKING ±50 spaces

LEASE RATE \$13.50 PSF, NNN

EXPENSES \$7.12 PSF (2025 est.)



- Flexible BP-zoning
- High level of interior finishes
- Kitchen/break areas on each level
- Lab space



- Seller can lease back or vacate as a part of sale





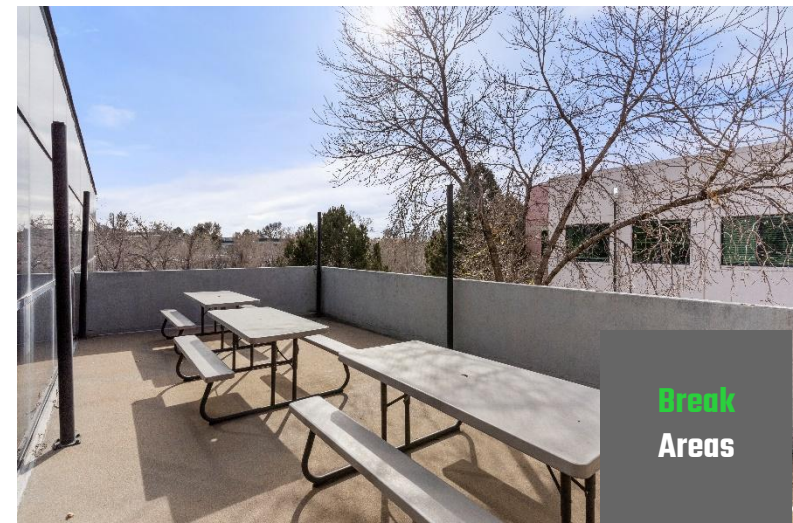
Warehouse
1 Dock
1 Drive-In



Lots of Natural Light



Meeting Areas



Break Areas



Kitchens

THE INFORMATION CONTAINED HEREIN WAS OBTAINED FROM SOURCES BELIEVED TO BE RELIABLE, HOWEVER, SOCO COMMERCIAL REAL ESTATE, LLC MAKES NO GUARANTEES, WARRANTIES, OR REPRESENTATIONS AS TO THE COMPLETENESS OR ACCURACY THEREOF. THE PRESENTATION OF THIS PROPERTY IS SUBMITTED SUBJECT TO ERRORS, CHANGES OF PRICE OR CONDITIONS PRIOR TO SALE OR LEASE, OR WITHDRAWAL WITHOUT NOTICE.

AMENITIES AERIAL



- LOWE'S
- COSTCO WHOLESALE
- Panera BREAD
- KOHL'S
- noodles company
- CHIPOTLE MEXICAN GRILL

MARK DABLING BLVD

NEVADA AVE

AUSTIN BLUFFS PKWY

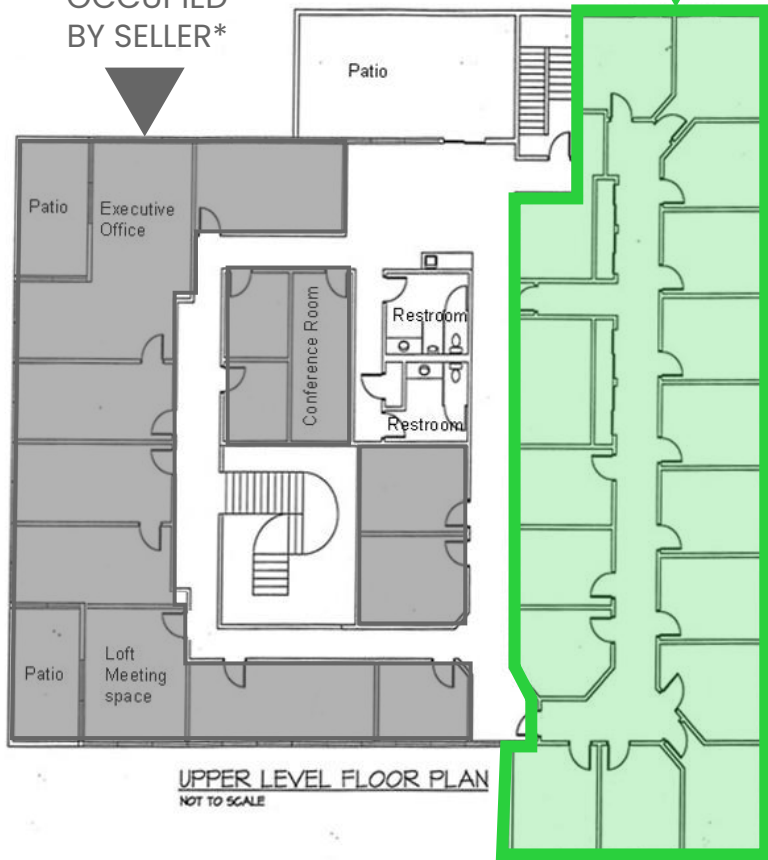
GARDEN OF THE GODS RD



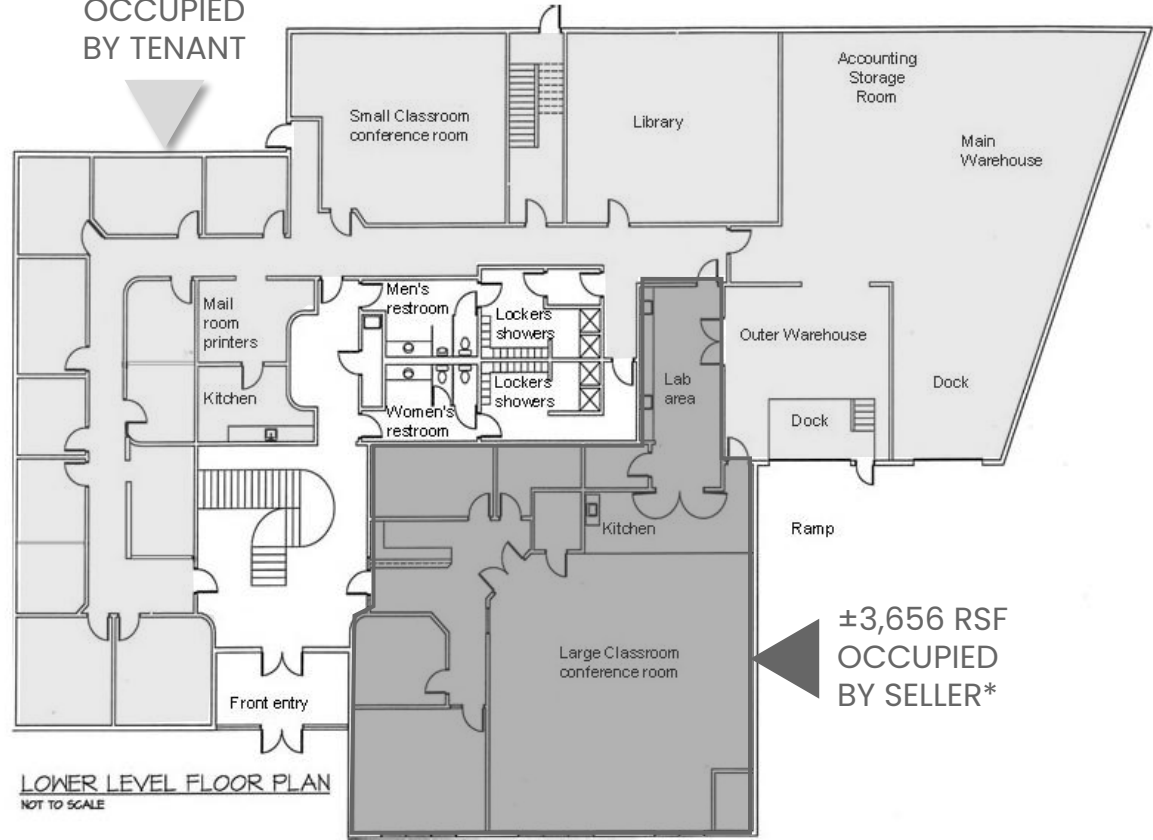
FLOOR PLANS

**±5,554 RSF
FOR LEASE**

±5,066 RSF
OCCUPIED
BY SELLER*



±8,408 RSF
OCCUPIED
BY TENANT



±3,656 RSF
OCCUPIED
BY SELLER*

*Seller is willing to leaseback or vacate the space.

